

Customize your Heli-Carrier



Carrier

OPTIONS

For V1000 series

Extend your Carrier applications:
Add Features to meet your **Needs**
And Enjoy even more **Efficiency**



Power Supply

Cable & 3 Prong Plug System as a back-up device to power helicopter using Carrier Batteries in the event of helicopter battery power shortage.



OPS Option Power Supply. 24v. Connected on two batteries (2x12v) with Three Prong Receptacle

Lighting

Powerful lights to view past helicopter tail when handling at night or into hangar



OLS Option Light Syst. 2 Powerful LED lights Each 27w, 2000 LM, 6000k, 24v.

Pivotal Arms

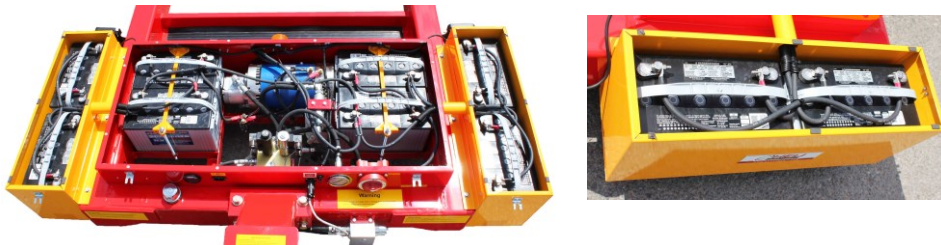
For optimal counterweight arm position choice against skid or to contour floats, use the popular Pivotal Arms. Ideal for fleets of small to large helicopter sizes.



OPCA: Opt. Pivotal Counterweight Arm

Extra Range

For Intense Operations, increase Carrier Range by Doubling Battery Pack. Option is a pair of yellow battery compartments & its wiring.



OEBC Option Extra Battery Compartments

Battery Charger & Cords



BC18AMPS: Heavy Duty Battery Charger. 18 amps 115/230v.

OBCEC30: Charger Extension Cord Allows to run from charger to Carrier without having to carry charger. 30' (9m) long. With 14 gauge cable & Anderson tips

Traction on Ice

Increase traction on Iced tarmac. Additional Traction Wheel with Studs. Ready to install quickly in replacement of regular traction wheel for those rough extra icy months



OSTW: Option Studded Traction Wheel

Side Direction Control

Use Side Direction Arm to perform turns when standing aside helicopter in order to view helicopter tail in tight or dark hangar.



OSCAE Side Control Arm Extension Allows directional control standing at helicopter side.

Emergency Tow Bar

Tow bar to tow Carrier back to base. For organisations requiring a back-up plan in the remote eventuality of carrier failure in field.



OETOB Option Emergency Tow Bar

Marine Environment

Adapt Carrier to particulars of sea operations with more protective coating and triple crane hooks for loading onto vessel & storage away from landing pad.

Our Marine Environment Coating:

- 1- Surface Preparation, Sanding, Solvent & Phosphoric Acid wash.
- 2- Primer 1/2 1 coat @ Clovazinc 3 (Organic zinc primer)
- 3- Primer 2/2 1 coat @ Cloverguard (High Build Epoxy)
- 4- Paint 1/2 1 Coat @ Gemini Armour Shield (from Cloverdale)
- 5- Paint 2/2 1 Coat @ Gemini Armour Shield (from Cloverdale)
- 6- Linen Oil pulverisation within tube frames to seal all areas that cannot be painted
- 7- Electric Terminal Connections Sealing manually applied on batt. terminals & Connectors



OMEC: Option Marine Environment Coating
Coating process in 7 steps. Includes 3 Crane hooks.

OBCEC50: Extra long 50' (15m) long Battery Charger Cord for Carriers stored in zones for long term storage on Oil Platforms. 12 Gauge cable with Anderson Tips.

Outdoor Storage

Protect Carrier with Tarp
Made with high quality 600 denier polyester fabric coated with acrylic meeting multiple FR Standards. Tarp is supplied with two Vents.



OTC: Option Tarp Cover

Remote Control

New! Radio Controlled Carrier Option



V1061-RC shown



Option Remote Control: V1000-**RC**

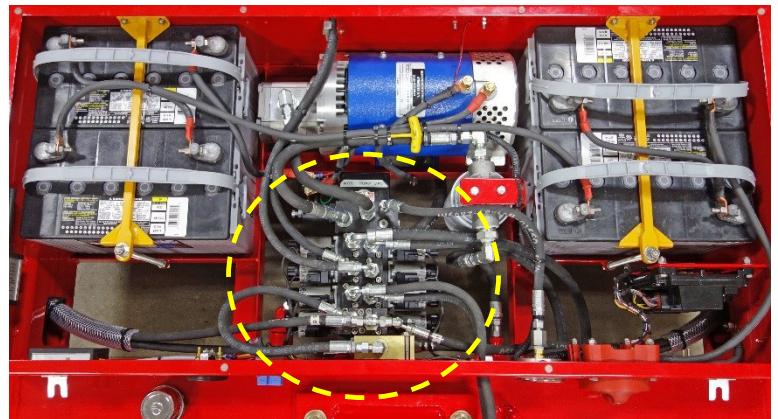


Heavy Duty - Portable Transceiver

Automatic Millisecond Frequency Hopping for higher safety
Transmission method: "Listen before Talk" Technology for Europe
Frequency Ranges: 433,075-434,775 MHz (69 Channels) for Europe,
902-928 MHz for North America. FCC ID: SCAH153V2

Heavy Duty - Hydraulic Driven Steering

With Compact Hydraulic Rotary Actuator
Rugged, Reliable, High Torque performance
Smooth Heavy Machinery Class Steering



Heavy Duty - Proportional Directional Spool Valve

Valve with Load Sensing that provides High Energy Efficiency
Each flow section sized for Precise Control via custom machined Spool
(from 2 to 5 liters/min according to specific actions needed)
All Spools with electronic adjustment & back-up manual adjustment
All surfaces corrosion-inhibition, gas nitride.