

for Lightweight Skidded Helicopters



Carrier

V900 Series

V910, V920



Light Duty Heli-Carrier

- Narrower width
- Budget Solution
- For Privates & Small Operators

Ideal For

- **AS350, B206B, EC120, MD500 R44, R66**

Effortless Handling

- Easy to use Tiller Handle
- Silent, Smooth & Precise
- Allows Extra Delicate Operations



Great Manoeuverability

- Direction wheel offers **150° radius turn**
- Can be lifted partially for low hangar doors
- Lifts up to 8" thus ensuring 6" ground clearance
- Easy Attachment & Detachment if uneven terrain
- Three Point Ground contact for uneven terrain

V900 Series Models

- V910 Manual Handle Direction
- V920 Remote Controlled



V920 Remote Control



Coming Soon!



Specifications:

Capacity:

Lifting Up to 4000 lbs (1800kg)

Operation:

V910: For action & acceleration use right thumb to move tiller switch away from Neutral Zone. Tiller switch Up for forward, Down for backward. Releasing tiller switch automatically triggers deceleration to full stop.

Drive Motors:

2x 400w motors de-rated with sprockets
Traction at support wheels

Lifting:

V910: Up-Down with left Tiller switch
Hydraulic pump. 1.5 c.c. per rev.
2000w DC, 24v.
1.6 liter tank

Electricals:

24v System
Controller 200 amps
Attachment lights: 2x 9w Eagle Eyes
Converter 24v-to-12v for Attachment lights

Charger:

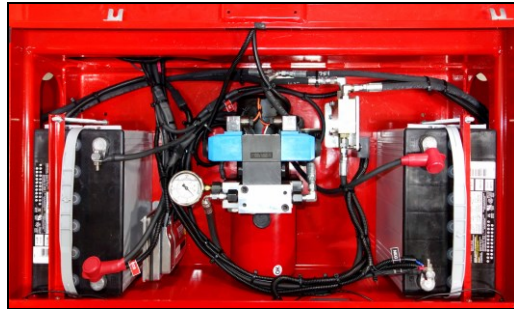
4amps. 115/230v. Included

Batteries:

Uses 2x Group 27 size batteries
With threaded tips
Deep Cycle Lead Acid batteries readily available worldwide.
Recommended: sealed AGM or GEL
Can also use unsealed WET batteries
Batteries Not included
Helitowcart can supply batteries on request

Shipping:

Ships in easy to re-assemble modules
Crate is 5' x 6' x 30" (183x153x76 cm)
Weight: 1600lbs (727kg)



Options



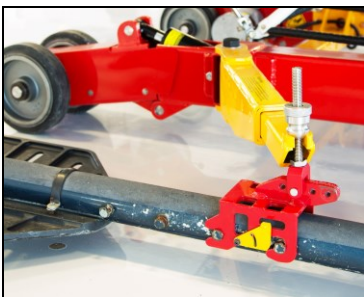
Light System - OLS / 2 Powerful lights, Each with 27w, 2000LM, 6000k, 24v.

GPU kit, 24v. output from Carrier's own batt. with Aviation Standard Receptacle. Called OPS - Option Power Supply

OPCA Optional Pivotal Arm to contour floats.



Standard Counterweight Arms:



Attachments

AS350	B206B	B206L	EC120	MD500	Univ (R44-R66)