

ASSEMBLY NOTES:

- REMOVE ALL BURRS AND BREAK SHARP EDGES.
- USE STANDARD SHOP PRACTICES AS OUTLINED IN AC43.13-1B, CHAPTER 7, "AIRCRAFT HARDWARE, CONTROL CABLES, AND TURNBUCKLES" OR STANDARD AIRCRAFT WORKERS MANUAL, SECTION 7 "SHOP PRACTICES".

3. TIGHTEN FASTENERS AS FOLLOWS:

AN4 BOLT	50-70 INCH-POUNDS (DURING INSTALLATION)
MS27039-08 SCREW	12-25 INCH-POUNDS (DURING INSTALLATION)
MS27039-1 SCREW	20 INCH-POUNDS MAX. (PRE-ASSEMBLY)
RELAY CONTACT TERMINAL	60 INCH-POUNDS MAX. (PRE-ASSEMBLY)
RELAY COIL TERMINAL	16 INCH-POUNDS MAX. (PRE-ASSEMBLY)
RECEPTACLE 5/16" STUD	120 INCH-POUNDS MAX. (PRE-ASSEMBLY)
RECEPTACLE 3/16" STUD	18 INCH-POUNDS MAX. (PRE-ASSEMBLY)
CIRCUIT BREAKER SCREW	6 INCH-POUNDS MAX. (PRE-ASSEMBLY)
CIRCUIT BREAKER MOUNT	40 INCH-POUNDS MAX. (PRE-ASSEMBLY)

4. COVER TERMINALS WITH SILICONE BOOT (NOT SHOWN IN DIAGRAM). SECURE WIRES TOGETHER AND BOOTS ON WIRES WITH TY-RAPS WHERE POSSIBLE.

5. SELECT BATTERY CABLE OF SUITABLE LENGTH TO REACH THE BATTERY INSTALLATION IN THE SUBJECT R44 HELICOPTER. USE:

WIRE	APPLICABLE	DASH
929-B-4	STANDARD BATTERY CONFIGURATION	01
929-C-4	TAILCONE-MOUNTED BATTERY CONFIGURATION	02
929-C-4	NOSE-MOUNTED BATTERY CONFIGURATION	03

IDENTIFY ASSEMBLY OF KIT WITH APPROPRIATE PART+DASH NUMBER.

6. IDENTIFY POLARITY OF DIODES BEFORE INSTALLATION

THIS DRAWING CONTAINS INFORMATION AND DATA WHICH IS PROPRIETARY TO AERO DESIGN LTD. THIS DRAWING, OR ANY PORTION THEREOF, MAY NOT BE REPRODUCED, COPIED, OR DUPLICATED IN ANY MANNER, NOR USED FOR MANUFACTURING WITHOUT THE WRITTEN CONSENT OF AERO DESIGN LTD. BY ACCEPTING THIS DRAWING FOR REFERENCE, THE RECIPIENT AGREES TO HOLD AERO DESIGN LTD. HARMLESS FROM THE USE, OR MISUSE, OF THIS DRAWING OR THE INFORMATION CONTAINED THEREON.

REV.	DESCRIPTION OF CHANGE	INITIALS	DATE
A	VARIOUS CHANGES TO PARTS LISTS	STF	OCT 12/11

PARTS LIST (SEE PL929, MASTER PARTS LIST, CURRENT REVISION)

QTY	QTY	QTY	QTY	PART NUMBER	ITEM	NAME / TYPE	SIZE / DESCRIPTION	REFERENCE NO.
				92911-01	1	E.P.R. KIT ASSEMBLY	INSTALL W/ STANDARD BATTERY ONLY	115-0101-00-A
				92911-02	2	E.P.R. KIT ASSEMBLY	INSTALL W/ TAIL BATTERY ONLY	115-0102-00-A
				92911-03	3	E.P.R. KIT ASSEMBLY	INSTALL W/ NOSE BATTERY ONLY	115-0103-00-A
1	1	1		92922-01	11	MOUNTING BRACKET		335-0101-00-A
1	1	1		92923-01	12	BACKING PLATE		335-0102-00-A
1	1	1		MS3506-1	13	RECEPTACLE	CORSAIR P/N CJ01GP3RP	255-0101-00-A
1	1	1		586-114111	14	POWER RELAY	200A, SPNO, STANCOR / WHITE-ROGERS)	255-0102-00-A
-	-	-		B415-2	15	POWER RELAY (ALTERNATE)	MIL-R-6106, SPST, KISSLING	255-0103-00-A
-	-	-		6041H205	16	POWER RELAY (ALTERNATE)	MIL-R-6106, SPST, EATON	255-0104-00-A
1	1	1		MS22073-3	17	CIRCUIT BREAKER	KLIXON (TEXAS INST.)	255-0105-00-A
1	1	1		929-A-4	20	WIRE ASSEMBLY	INPUT POWER WIRE	355-0101-00-A
			1	929-B-4	21	WIRE ASSEMBLY	RELAY WIRE	355-0102-00-A
1	1			929-C-4	22	WIRE ASSEMBLY	REQUIRED TO REACH BATTERY IN TAIL/NOSE	355-0103-00-A
1	1	1		929-D-18	23	DIODE & WIRE ASSEMBLY	CIRCUIT BREAKER WIRE	355-0104-00-A
1	1	1		929-E-18	24	WIRE ASSEMBLY	RELAY COIL POWER	355-0105-00-A
1	1	1		929-F-18	25	WIRE ASSEMBLY	RELAY COIL GROUND	355-0106-00-A
1	1	1		929-G-4	26	WIRE ASSEMBLY	POWER GROUND WIRE	355-0107-00-A
1	1	1		929-H-18	27	DIODE & WIRE ASSEMBLY	RELAY COIL FLYBACK PROTECTION	355-0108-00-A
-	-	-		A151A	28	DIODE & WIRE ASSEMBLY	(ALTERNATE TO 929-H-18)	255-0109-00-A
3	3	3		AN4-5A	30	BOLT	1/4"-28 UNF	235-0201-00-A
6	6	6		AN960-416	31	WASHER	1/4"	235-0202-00-A
3	3	3		MS21042L4	32	NUT	1/4"-28 UNF	235-0203-00-A
4	4	4		MS27039C0806	33	SCREW	#8-32 UNC	235-0204-00-A
8	8	8		NAS1149FN832P	34	WASHER	#8	235-0205-00-A
4	4	4		MS21042L08	35	NUT	#8-32 UNC	235-0206-00-A
4	4	4		MS27039-1-14	36	SCREW	#10-32 UNF	235-0207-00-A
8	8	8		NAS1149F0332P	37	WASHER	#10	235-0208-00-A
4	4	4		MS21044N3	38	NUT	#10-32 UNF	235-0209-00-A
A/R	A/R	A/R		MS3367-4-9	39	TY-RAP		235-0103-00-A
1	1	1		92925-01	40	PLACARD		335-0003-00-A

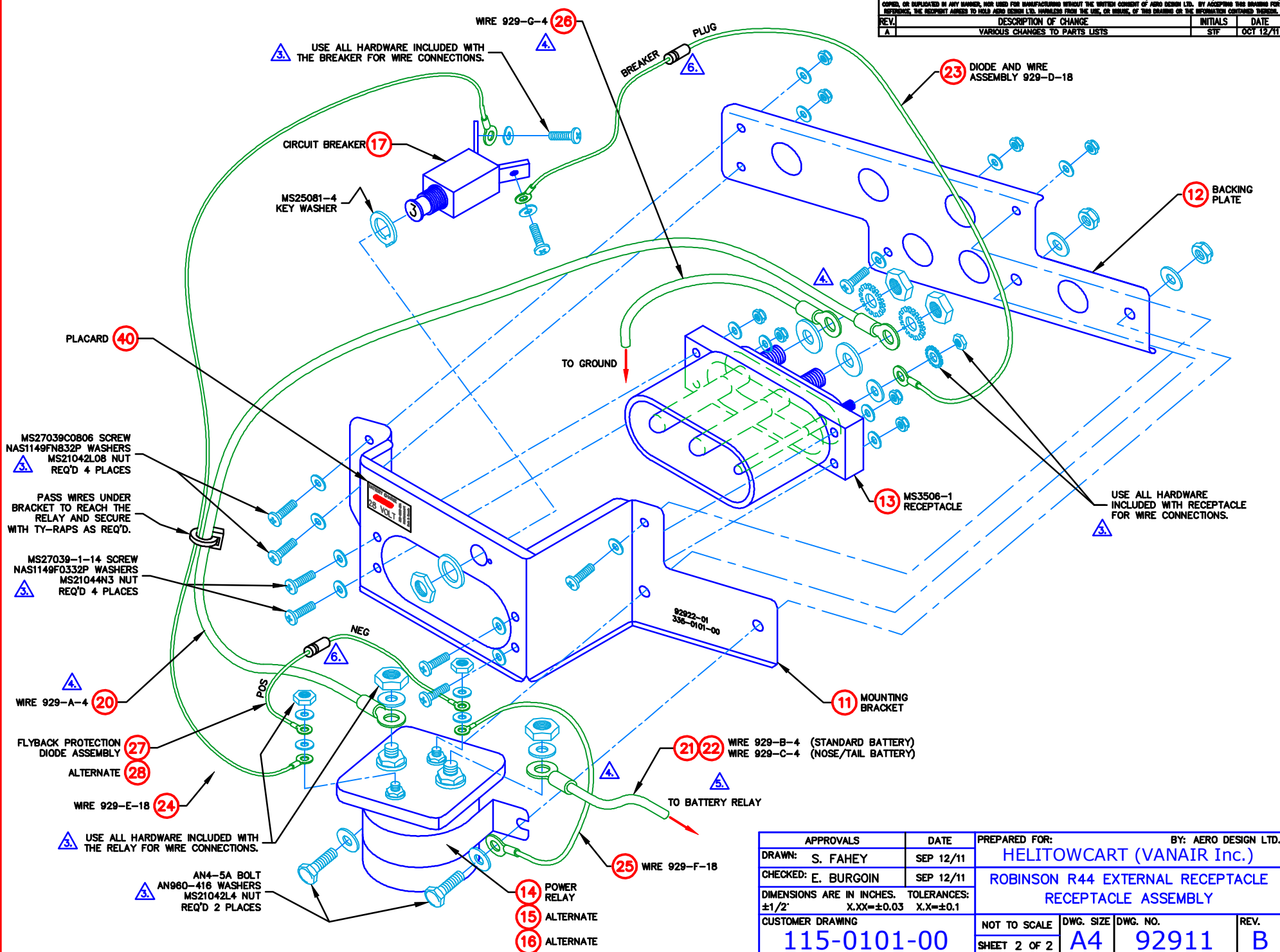
3.

4.

APPROVALS		DATE	PREPARED FOR:	BY: AERO DESIGN LTD.
DRAWN: S. FAHEY		SEP 12/11	HELITOWCART (VANAIR Inc.)	
CHECKED: E. BURGOIN		SEP 12/11	ROBINSON R44 EXTERNAL RECEPTACLE RECEPTACLE ASSEMBLY	
DIMENSIONS ARE IN INCHES. TOLERANCES: ±1/2" X.XX=±0.03 X.X=±0.1				
CUSTOMER DRAWING			NOT TO SCALE	DWG. SIZE
115-0101-00			DWG. NO.	REV.
SHEET 1 OF 2			A4	92911 B

THIS DRAWING CONTAINS INFORMATION AND DATA WHICH IS PROPRIETARY TO AERO DESIGN LTD. THIS DRAWING OR ANY PORTION THEREOF, MAY NOT BE REPRODUCED, COPIED, OR DUPLICATED IN ANY MANNER, NOR USED FOR MANUFACTURING WITHOUT THE WRITTEN CONSENT OF AERO DESIGN LTD. BY ACCEPTING THIS DRAWING FOR INSPECTION, THE RECIPIENT AGREES TO HOLD AERO DESIGN LTD. HARMLESS FROM THE USE, OR ABUSE, OF THIS DRAWING OR THE INFORMATION CONTAINED THEREIN.

REV.	DESCRIPTION OF CHANGE	INITIALS	DATE
A	VARIOUS CHANGES TO PARTS LISTS	STP	OCT 12/11



APPROVALS	DATE	PREPARED FOR:	BY: AERO DESIGN LTD.
DRAWN: S. FAHEY	SEP 12/11	HELITOWCART (VANAIR Inc.)	
CHECKED: E. BURGOIN	SEP 12/11	ROBINSON R44 EXTERNAL RECEPTACLE RECEPTACLE ASSEMBLY	
DIMENSIONS ARE IN INCHES. TOLERANCES: ±1/2" X.XX=±0.03 X.X=±0.1		NOT TO SCALE	DWG. NO.
CUSTOMER DRAWING		DWG. SIZE	REV.
115-0101-00		A4	B
SHEET 2 OF 2		92911	