



Introduction:

The Helitowcart is a device that is rolled under the helicopter nose up to the attachment position (where skids start curling up). In order to easily verify compatibility of our various tow cart models to your helicopters, we recommend using a large cardboard and cut it to match the overall dimensions according to figures showed next page. Then simply slide this rectangle cardboard under the belly. Our diagrams include the yellow attachment bar and include the wheels.

The Yellow Attachment Bar is called AT45 on regular height V602, V614 and V650. There is a low version called AT46 made specifically for the low version V610.

Once you have taken your measurements, we recommend that you also take pictures of possible conflicting accessories.

With this information we can help you confirm compatibility.

If there is a **Wire Strike** installed on the helicopter this usually is not an issue as the tow cart can usually be rolled between the wire strike and one skid. Once under the helicopter the tow cart can then easily be repositioned to the center position.



ELEVATION VIEWS

Figure 1: Dimensions for clearing helicopter underbelly by sliding tow cart normally.

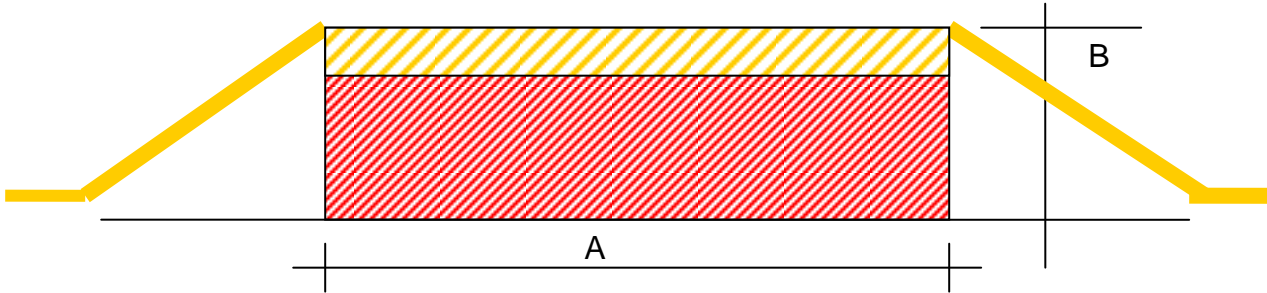


Figure 2: Dimensions for clearing tow bar rotated 90 deg to clear underbelly accessories.

When sliding tow bar 90 deg, this allows to clear antennas that could come in conflict with bar if sliding tow cart according to figure 1 above. Once the tow cart has reached its desired position the yellow attachment bar is then rotated back to position to reach the skids. The rotation is on a free movement pivot that is effortless.

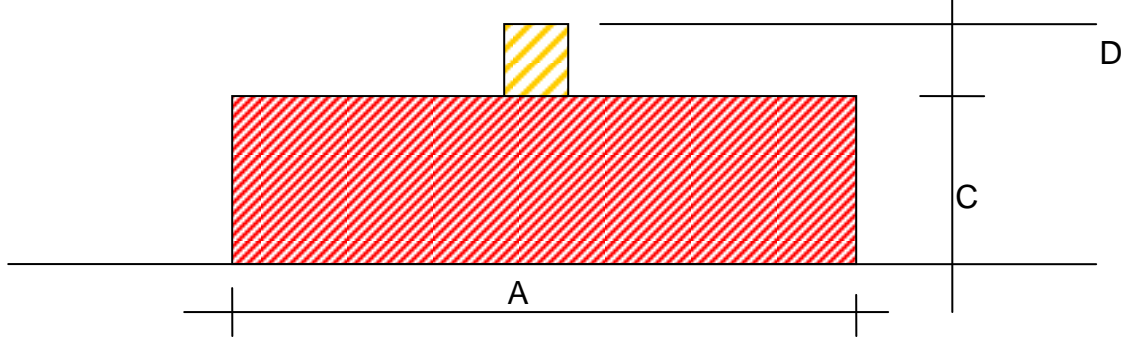
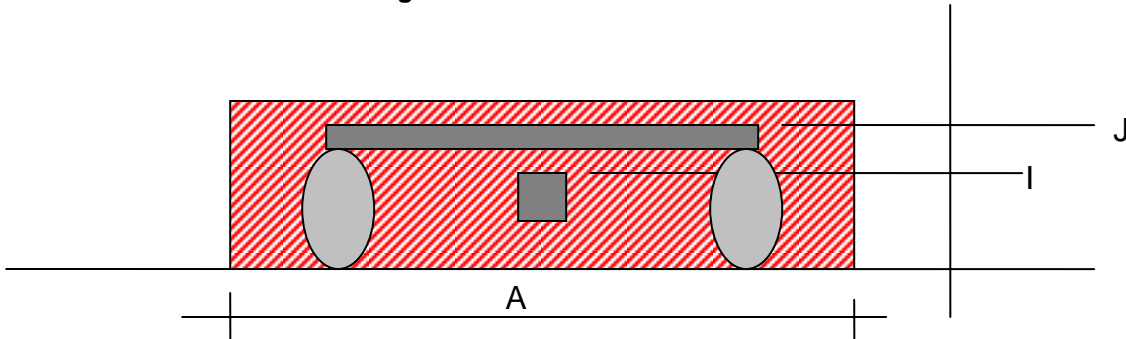


Figure 3: Dimensions for clearing Wire Strikes with Swivel Wheel Structure on V602 & V650



Measurement Chart:

	V602	V610	V614	V650
A	46" (117cm)	41" (104cm)	46" (117cm)	46" (117cm)
B	15.75" (40cm)	12.5" (32cm)	15" (38cm)	15" (38cm)
C	13" (33cm)	10.75" (27.5cm)	13" (33cm)	13" (33cm)
D	15.75" (40cm)	13.5" (34.5cm)	15" (38cm)	15" (38cm)
E	33" (84cm)	61" (155cm)	61" (155cm)	61" (155cm)
F	14" (36cm)	25" (53.5cm)	25" (53.5cm)	25" (53.5cm)
G	18" (46cm)	36" (91.5cm)	36" (91.5cm)	36" (91.5cm)
H	68" (173cm) extendable +9" (23cm)	na	na	88" (2235cm)
I	8" (20.5cm)	na	na	7.25" (184 cm)
J	11.5" (29cm)	na	na	11.5" (29cm)

TOP VIEW

Figure 4: Top view measurements to ensure attachment without conflict with accessories.

Once tow cart has been rolled under the helicopter it is now ready to be positioned for attachment. The AT45 yellow attachment bar is then extended to reach skids. The attachment point is where the skids start curling up.

We recommend tracing an imaginary line from one skid to the other at the point where the skids start to curl up. This line becomes the point against which the yellow attachment bar needs to be located (see figure below).

In order to check compatibility with helicopter, check that there is no object conflicting with yellow attachment bar, cabinet (dashed red color) and swivel wheel structure (dark grey zones).

